

# Regional reform in Lithuania

Andrius Valickas

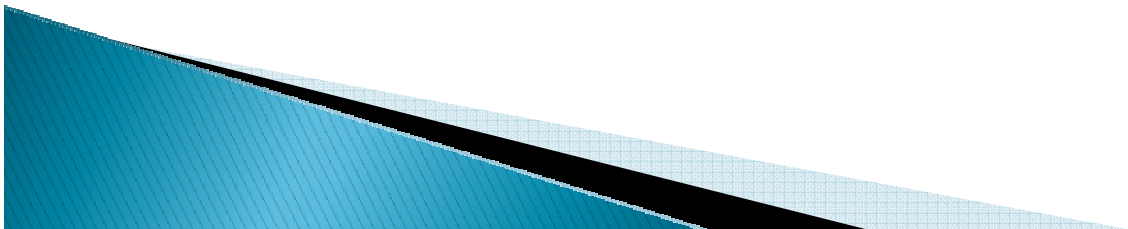
30/11/2009

Cesis

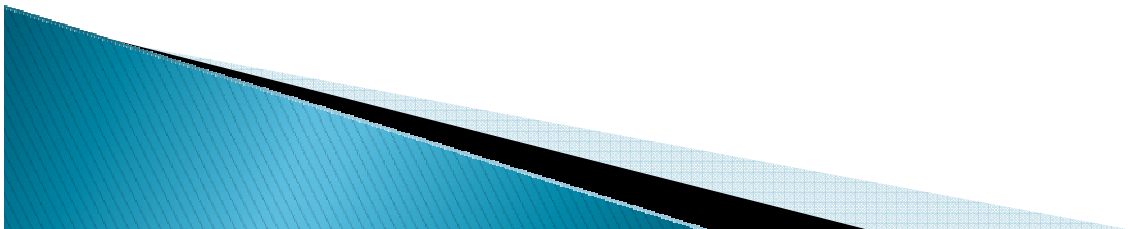
# Administrative division of Lithuania



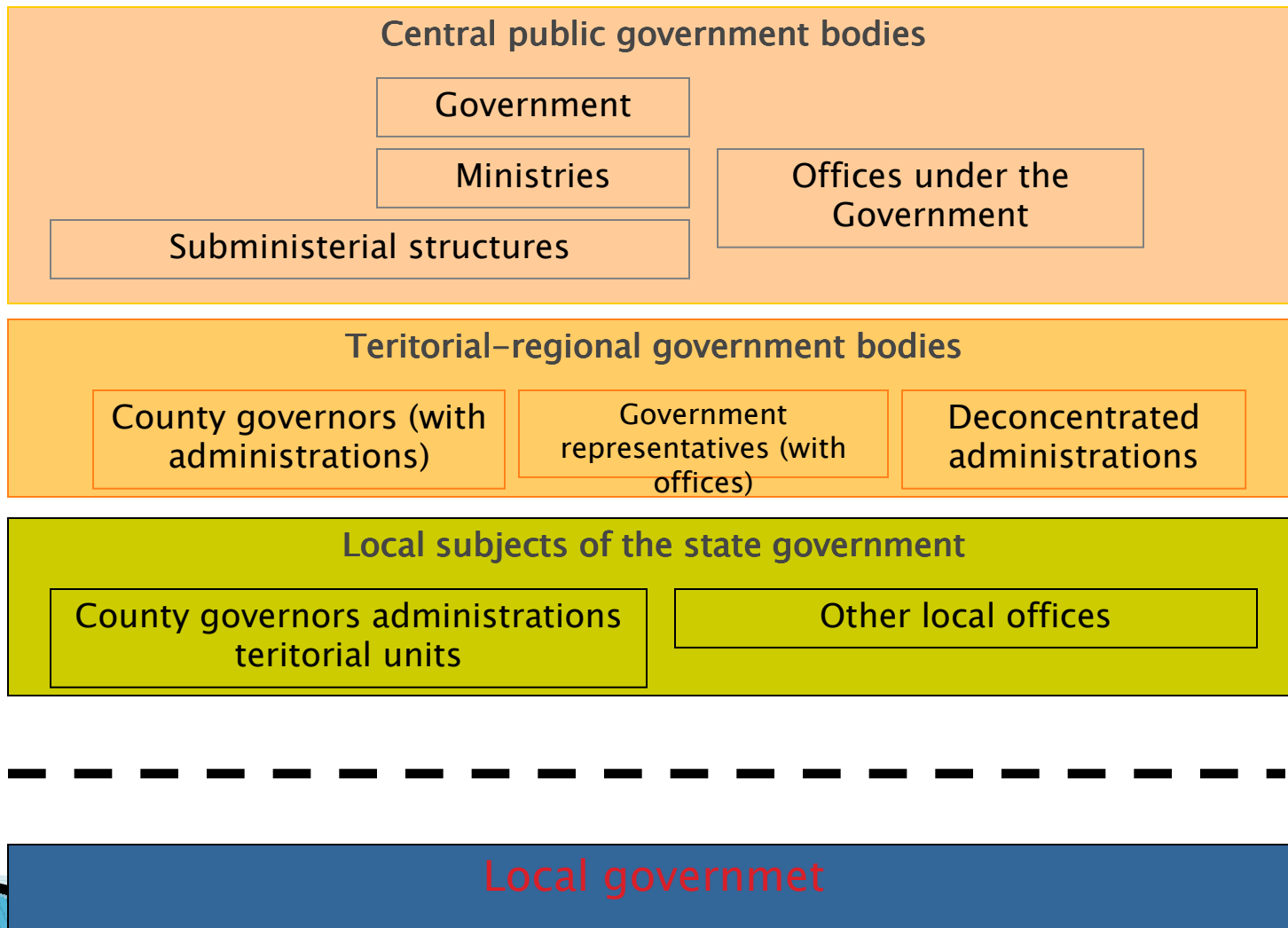
- ▶ From year 2000 there are 60 municipalities in the country.
- ▶ Average size of the municipality – 60 000 residents.
- ▶ Municipalities from 20 000 to 40 000 residents dominate.



- ▶ From year 1995 there are 10 counties in the country;
- ▶ The largest county – Vilniaus (850 000 residents);
- ▶ The smallest county – Tauragės (135 000 residents);
- ▶ Average size of the county – 350 000 residents;
- ▶ Counties from 150 000 to 200 000 residents dominate;



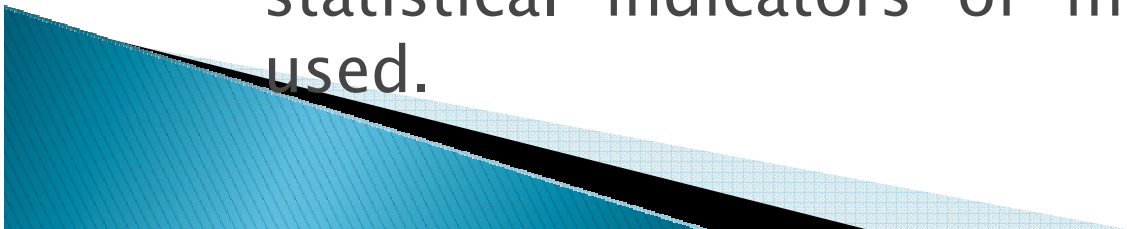
# Public government system of Lithuania:



The clear aim of the policy is the reduction of socio-economic disparities within the country, in other words, disparities between the statistical (in most cases administrative) units of the country.

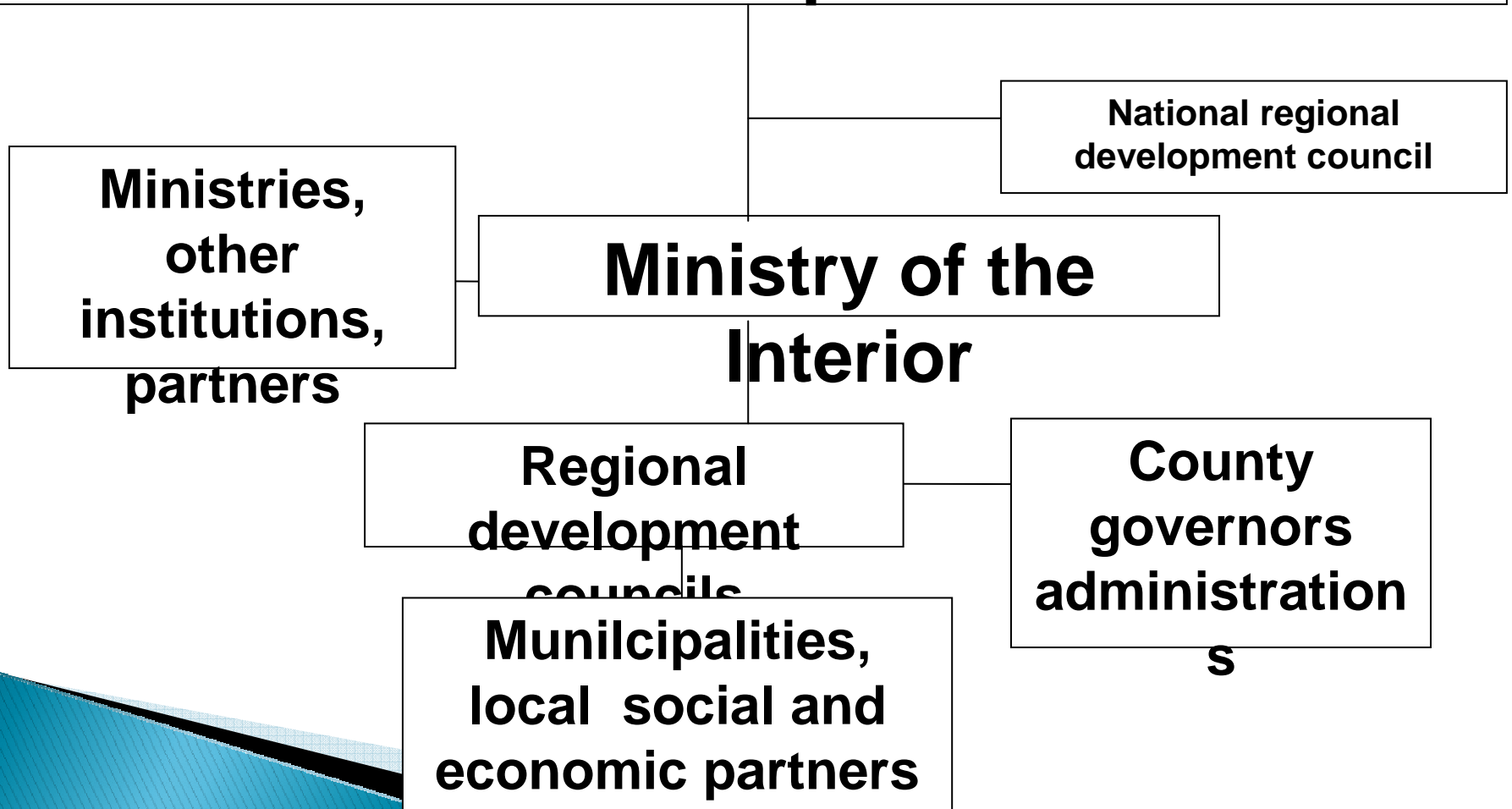
- According to the legislation, national regional policy must be implemented in all 10 Lithuanian counties. Considering this, the cohesion indicators of the county level are used.

- For the problem territories (municipalities) statistical indicators of municipal level are used.



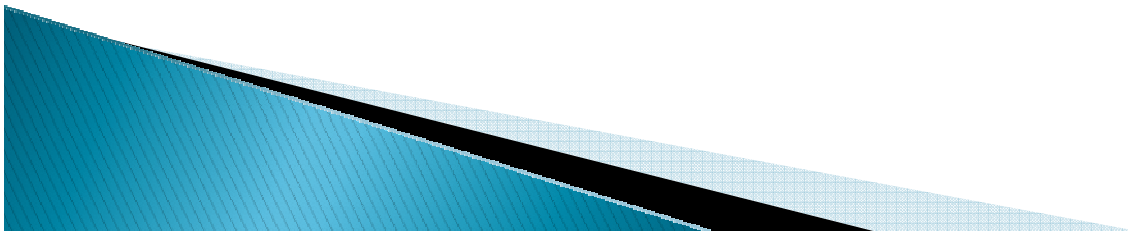
# Institutions in charge of the national regional policy

## Government of the Republic of Lithuania



# Institutions in charge of the national regional policy

- ▶ Ministry of the interior is the institution, responsible for the coordination of the national regional policy;
- ▶ County governors administrations are institutions, responsible for implementing national regional policy at the regional level





## BASIC ATTITUDES OF NATIONAL REGIONAL POLICY

National regional policy takes into account the limited financial resources and thus proposes to concentrate on the development of a limited number of centres, which have the highest development potential, problem territories, with highest social development needs and solving of specific problems of regional or local character of the sectors of economy.



# GROWTH CENTRES DEFINED IN LITHUANIAN REGIONAL POLICY STRATEGY

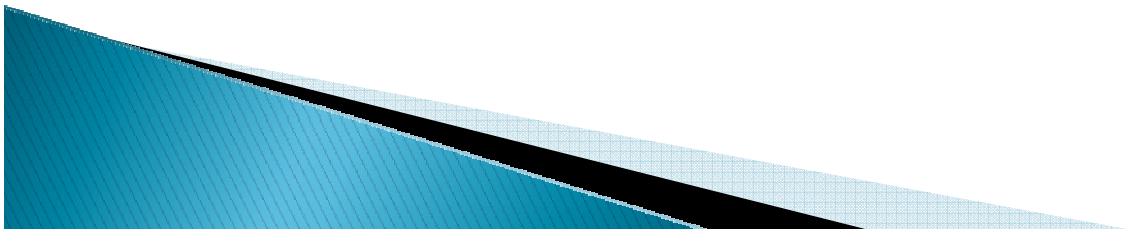


# PROBLEM TERRITORIES



The regional policy in Lithuania is seen as being executed:


- by means of integrating regional dimension into sectoral strategies and programmes (horizontal approach)
- via regional programmes for the solution of very specific regional problems (vertical approach)
- via local and regional initiatives, financed by the municipal budgets, state budget, EU structural support (vertical approach).



## LEGAL BASIS

- Law on Regional Development
  - Law on Governing of the County
  - Long Term State Development Strategy
  - Lithuanian Regional Policy Strategy until the Year 2013
  - Long Term Lithuania's Economy Development Strategy until the Year 2015
  - Sustainable Development Strategy
  - General Plan of the Territory of the Republic of Lithuania
  - Regulation of the Government on Problem Territories
- 

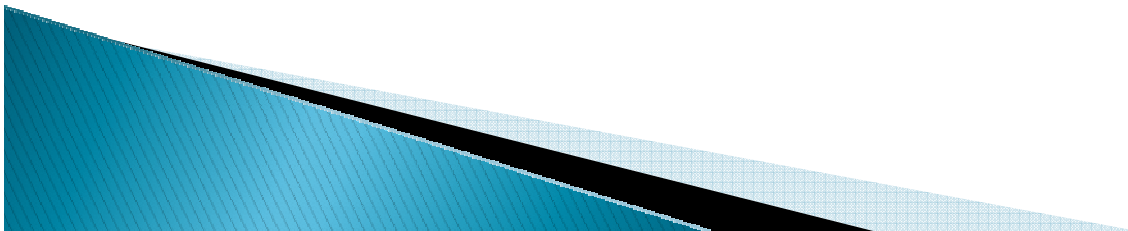
## EU STRUCTURAL SUPPORT IN THE CONTEXT OF THE NATIONAL REGIONAL POLICY (horizontal measures):

- Elimination of the competition principle for the public sector projects
  - Long term planning for the local and regional investments
  - Partial transfer of management functions (project selection) to the Regional councils
  - Allocations of Structural Funds exclusively for the local and regional needs
  - Additional funding for the growth centres and problem territories
- 

# EU STRUCTURAL SUPPORT IN THE CONTEXT OF THE NATIONAL REGIONAL POLICY (2007–2013)

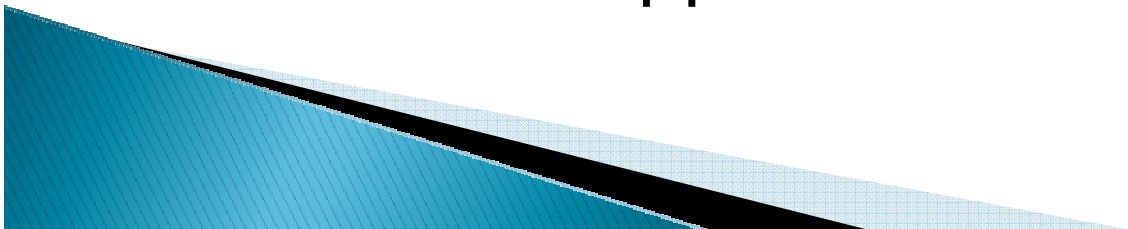
vertical measures:

- Development of the growth centres, identified in the National Regional Policy Strategy (120 MEUR) – 7 integrated development investment programmes
- Development of the problem territories (88 MEUR) – 14 development programmes for problem territories



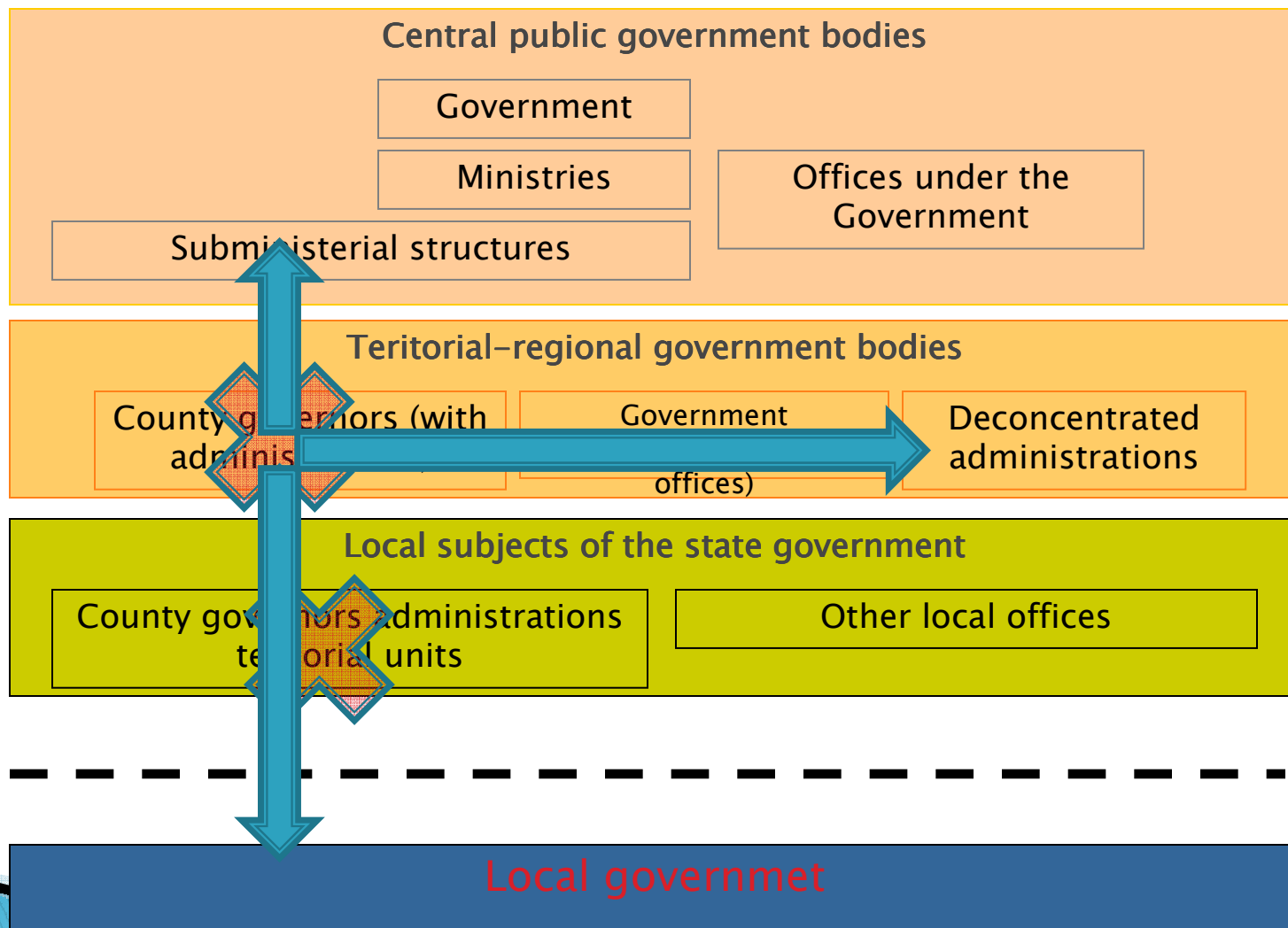
# Regional reform, main provisions

- ▶ Regional reform is the part of the overall administrative reform, aimed at optimizing the public government in Lithuania
- ▶ County governors administrations are being liquidated from 01/07/2010.
- ▶ The liquidation of county governors administrations shall not affect the use of EU structural support



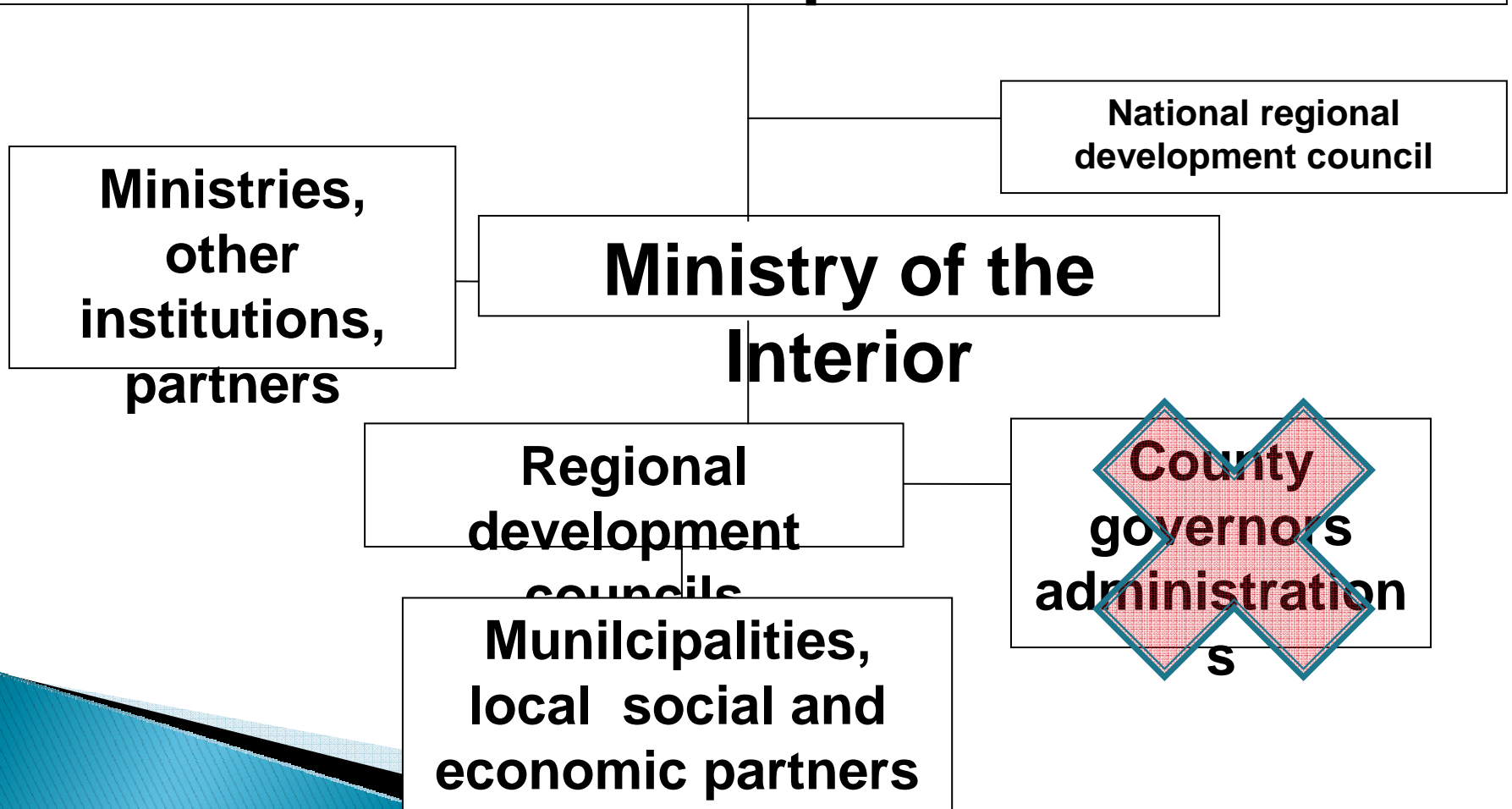


# Public government system of Lithuania:




# Institutions in charge of the national regional policy

## Government of the Republic of Lithuania



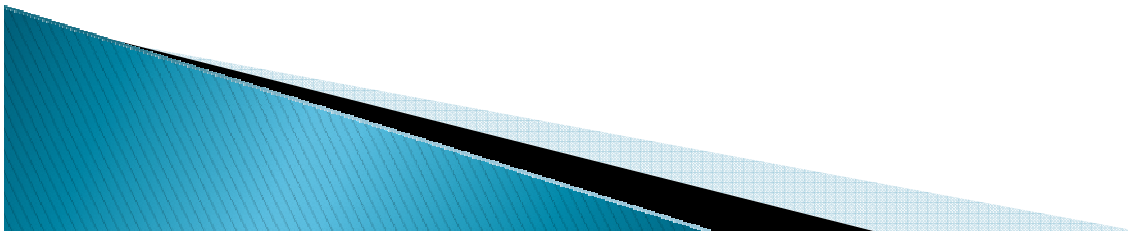
# Main changes in the national regional policy from 01/07/2010

- Functions to be executed by Ministry of the interior (or its regional subdivisions)
  - Preparation of the regional development plans.
  - Preparation of the regional project lists (for EU funding);
  - Coordination of actions from municipalities and social economic partners in the sphere of regional development;
  - Coordination of cross border cooperation (in the region)
  - Secretariat functions for the Regional development council.
- 

# Main changes in the national regional policy from 01/07/2010

All projects, funded by EU, and implemented by county governors administrations, shall be finished until 01/07/2010.

Subdivisions of the Ministry of the Interior (regional development offices) will remain the coordinator, but no longer the applicant.



# Main changes in the national regional policy from 01/07/2010

- ▶ Authority of the Regional development council and it's role in the ES support management shall not change.
- ▶ Ministry of the Interior shall provide all necessary technical support for it's functioning.

